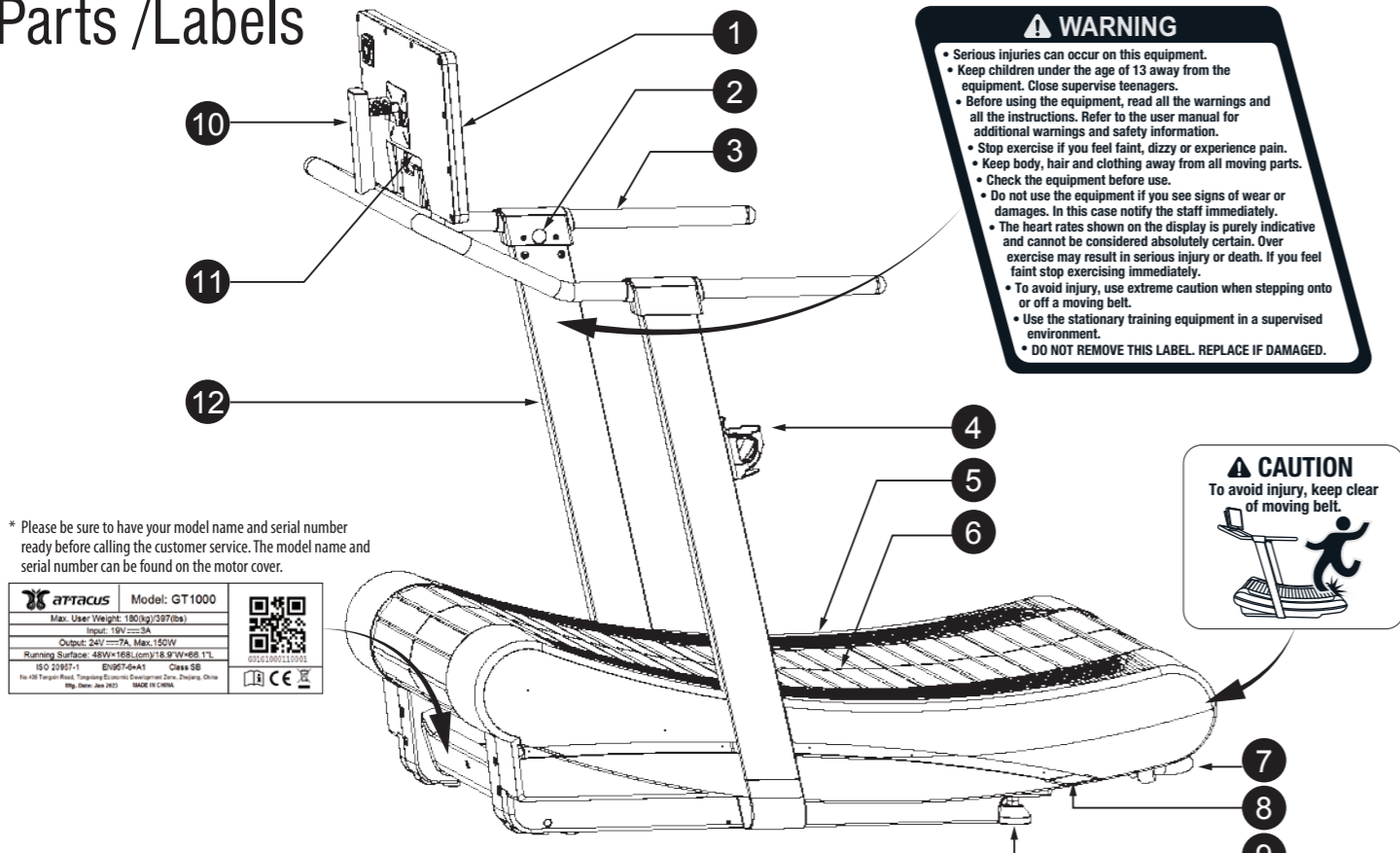


Parts /Labels



- 1 TFT Touchscreen Console
(For first-time use, please scan the QR code with your mobile device to register GPTfit.com)
- 2 Electronic Brake Button
- 3 Handrails (L/R)
- 4 Bottle Holder
(Bottle diameter range $\varnothing 65 \sim \varnothing 80$ mm)
- 5 Foot Rest (L/R)
- 6 Slat Belt
- 7 Transportation Handle
- 8 LED Light (L/R)
- 9 Foot Pad (L/R)
- 10 Console holder
- 11 RJ45 Connect Port
(Where the console plugged in.)
- 12 Standing Mast (L/R)
- 13 Power Input Port (IN 19V)
- 14 Power Output Port (OUT 24V)
- 15 Anti-Slip Pad (L/R)
- 16 Transportation Wheels (L/R)

Placement of the Equipment

Please place the equipment on a level ground and avoid direct sunlight. Do not place it outdoor, in the garage, open yard, humid, and/or ventilated places. For safety purpose, please leave a clear zone behind the treadmill at least 79" long and leave the both sides of the treadmill at least 2 ft widths and leave a clear zone front of the treadmill at least one ft long.

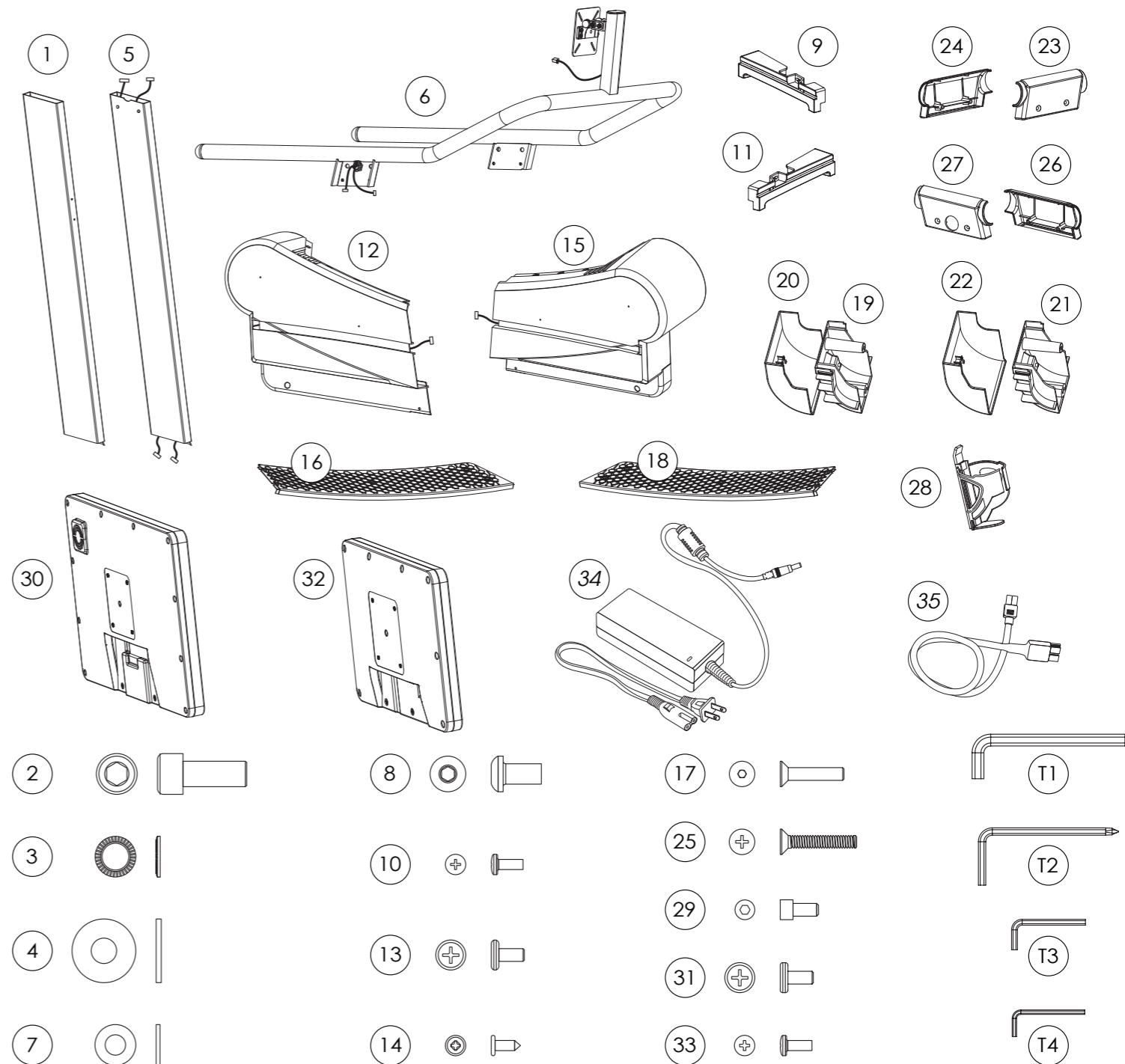
Limited Product Warranty

You are given only one original copy of this warranty card please preserved it properly.

- 1 If this product fails due to manufacturing reasons, we provide a 1-year manufacturer's warranty from the date of purchase/assembled. (Except for non-home users)
- 2 Please show this warranty card when requiring repair service.
- 3 If the warranty card is not stamped with the company seal (or dealer) or the contract is incomplete, it may loss the warranty rights, the following conditions are not within this limit:
 - Submit original invoice or proof of purchase.
 - Distribution document that can provide relevant proof of purchase.
- 4 Non-Warranty Repair Policy: (User needs to pay for the repairs.)
 - If malfunction or damage is caused by improper use, disassembly and modification.
 - Due to normal wear and tear of consumptive parts such as the TFT Touchscreen Console, Slat Belt, Foot Rest, Transportation Wheels, etc.

| | | | | | | | | | | | | |
|----------------|--|-------------|-------------|-------------|-------------|-------------|---|-------------|-------------|-------------|-------------|-------------|
| Model | Assembled on | | | | | | | | | | | |
| Serial No.* | <div> <div>YYYY</div> <div>/</div> <div>MM</div> <div>/</div> <div>DD</div> </div> | | | | | | | | | | | |
| SN: | <div></div> | <div></div> | <div></div> | <div></div> | <div></div> | <div></div> | <div></div> | <div></div> | <div></div> | <div></div> | <div></div> | <div></div> |
| Dealer's Stamp | | | | | | | Customer Service | | | | | |
| | | | | | | | Manufacturer Add.: No.405 Tongxin Road, Tongxiang Economic Development Zone, Zhejiang, China TEL: +86-573-8862 8666 | | | | | |

Part List

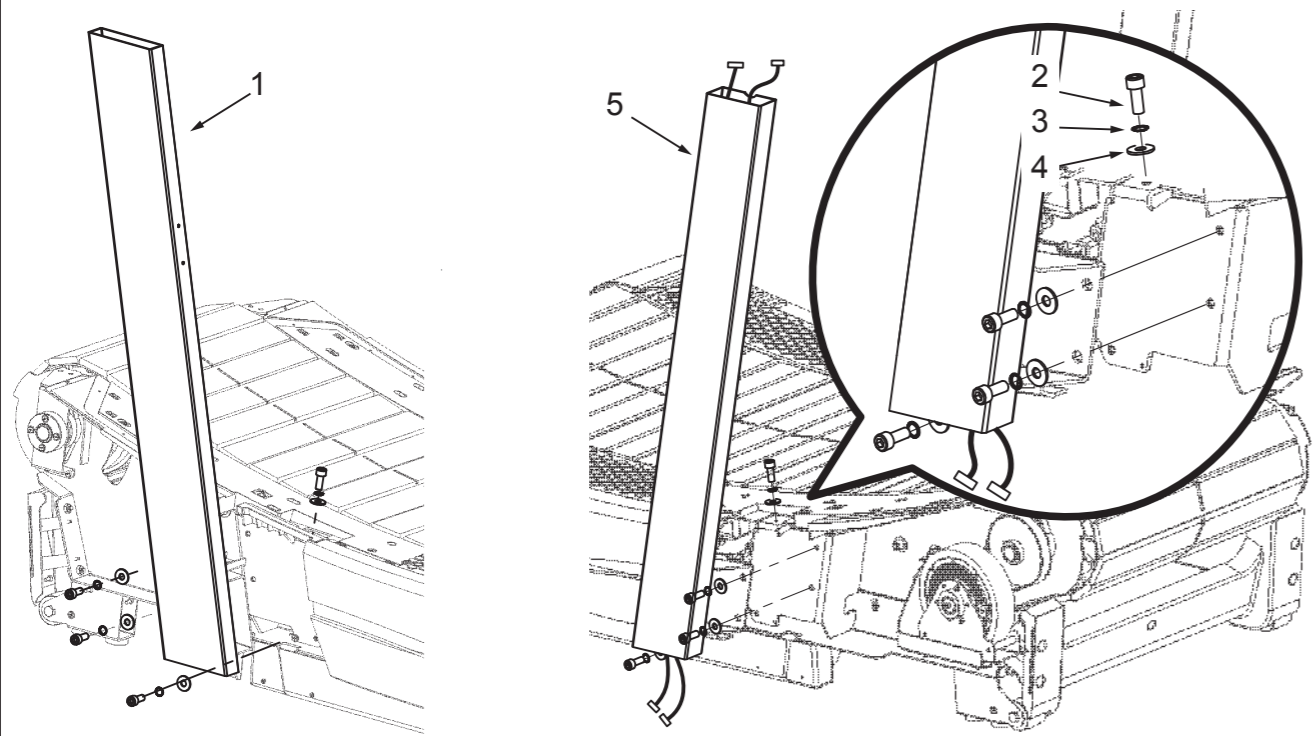


| ASSEMBLY PARTS | | | SCREWS | | | TOOLS | | |
|----------------|---------------------------------|-----|----------|--|-----|----------|---|-----|
| Ref. NO. | Specification | Qty | Ref. NO. | Specification | Qty | Ref. NO. | Specification | Qty |
| 6 | Handrail and Console Holder | 1 | 2 | Hex Socket Set Screw M10x1.5x25L | 8 | T1 | 8mm Hex Key (Allen Key) | 1 |
| 1 | Left Mast | 1 | 3 | Serrated Safety Washer M10 | 8 | T2 | 5mm Phillips Hex Key (Phillips Allen Key) | 1 |
| 5 | Right Mast | 1 | 4 | Flat Washer Ø10xØ25x2T | 8 | T3 | 4mm Hex Key (Allen Key) | 1 |
| 12 | Front Left Cover | 1 | 7 | Flat Washer Ø8xØ16x1.5T | 4 | T4 | 3mm Hex Key (Allen Key) | 1 |
| 15 | Front Right Cover | 1 | 8 | Button Head Hex Socket Screw M8x1.25x15L | 4 | | | |
| 30 | 21.5" TFT Console | 1 | 10 | Round Head Phillips Screws M4x0.7x10L | 2 | | | |
| 32 | 15.6" TFT Console (Alternative) | 1 | 13 | Large Phillips Flat Head Screws M5x0.8x10L | 6 | | | |
| 24 | Left Handrail Cover A | 1 | 14 | Truss Self Tapping Screw M4x10L | 12 | | | |
| 23 | Left Handrail Cover B | 1 | 17 | Flat head Self Tapping Screw M5x0.8x25L | 10 | | | |
| 26 | Right Handrail Cover A | 1 | 25 | Flat Head Phillips Self Tapping Screw M5x0.8x30L | 4 | | | |
| 27 | Right Handrail Cover B | 1 | 29 | Hex Socket Set Screw M5x12L | 2 | | | |
| 16 | Front Left Footrest B | 1 | 31 | Large Phillips Fat Head Screws M5x0.8x10L | 4 | | | |
| 18 | Front Right Footrest B | 1 | 33 | Round Head Phillips Screws M4x0.7x10L (15.6" TFT only) | 4 | | | |
| 9 | Mid-Left Cover | 1 | | | | | | |
| 11 | Mid-Right Cover | 1 | | | | | | |
| 19 | Inner Left Mast Cover | 1 | | | | | | |
| 20 | Outer Left Mast Cover | 1 | | | | | | |
| 21 | Inner Right Mast Cover | 1 | | | | | | |
| 22 | Outer Right Mast Cover | 1 | | | | | | |
| 28 | Bottle Holder | 1 | | | | | | |
| 34 | Charging Cable | 1 | | | | | | |
| 35 | Power Output Cable | 1 | | | | | | |

Assembly

-
- The treadmill is heavy, **DO NOT** attempt to move or assemble alone with single hand.
 - Please unpack and assemble the product at the designated location to reduce unnecessary moving.
 - Please follow the proper instructions. When performing each step, please be sure all the screws and bolts are in place and partially tighten. Please tighten all the screws and bolts once all are in place.

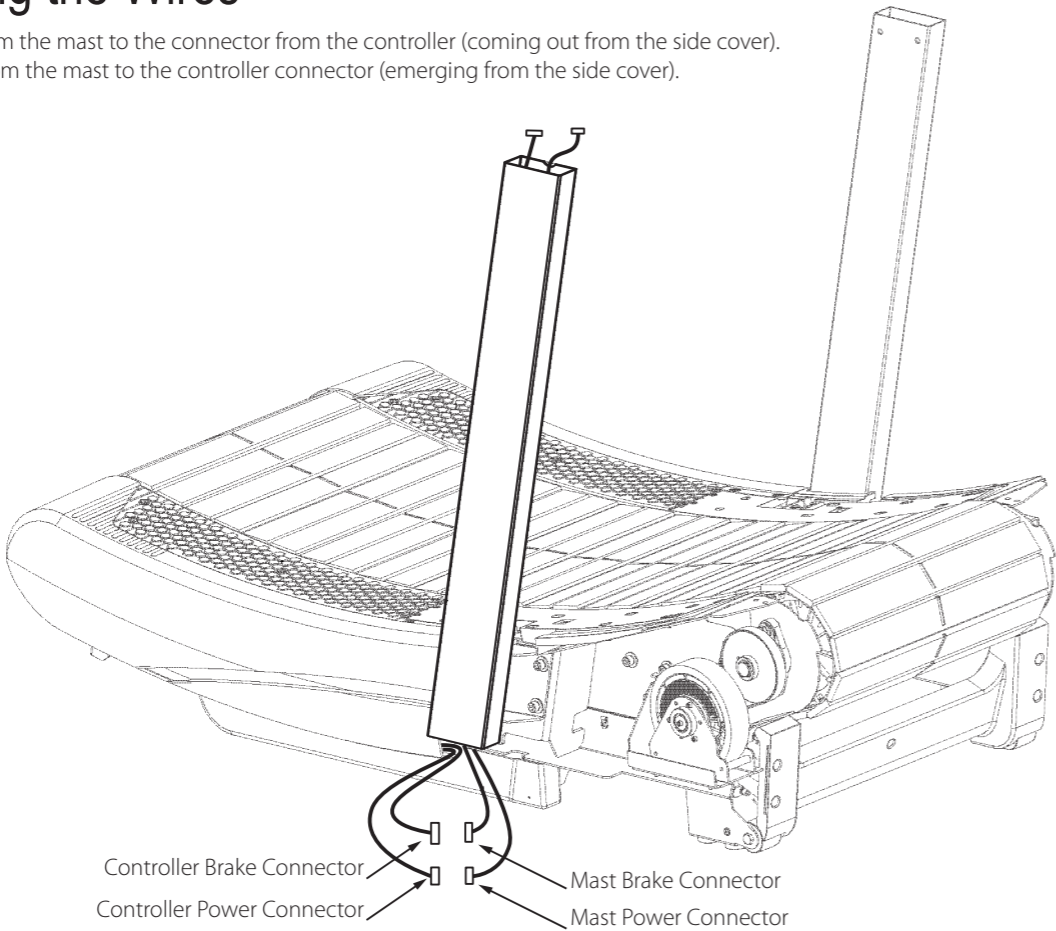
Step 1 Assembling Left and Right Masts



| ASSEMBLY PARTS | | | SCREWS | | | TOOLS | | |
|----------------|---------------|-----|----------|----------------------------------|-----|----------|---|-----|
| Ref. NO. | Specification | Qty | Ref. NO. | Specification | Qty | Ref. NO. | Specification | Qty |
| 1 | Left Mast | 1 | 2 | Hex Socket Set Screw M10x1.5x25L | 8 | T2 | 5mm Phillips Hex Key (Phillips Allen Key) | 1 |
| 5 | Right Mast | 1 | 3 | Serrated Safety Washer M10 | 8 | | | |
| | | | 4 | Flat Washer Ø10xØ25x2T | 8 | | | |

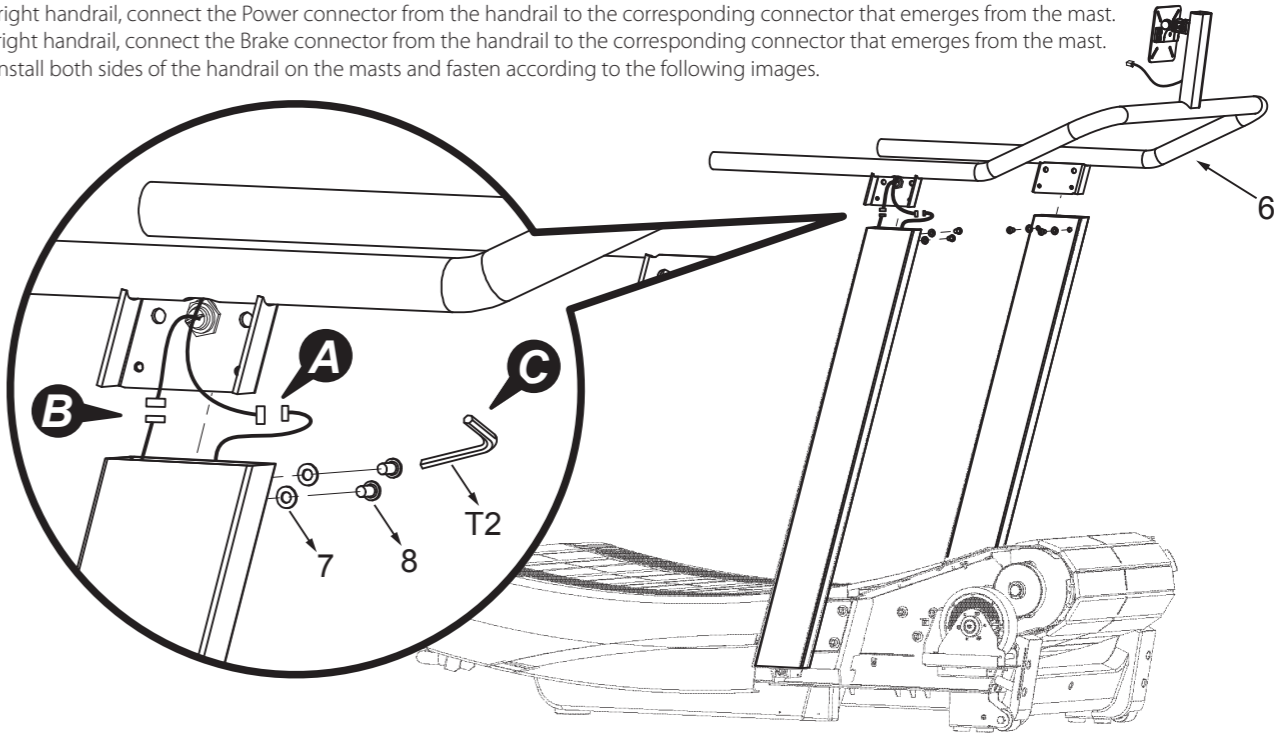
Step2 Connecting the Wires

- A) Connect the Brake connector from the mast to the connector from the controller (coming out from the side cover).
- B) Connect the Power connector from the mast to the controller connector (emerging from the side cover).



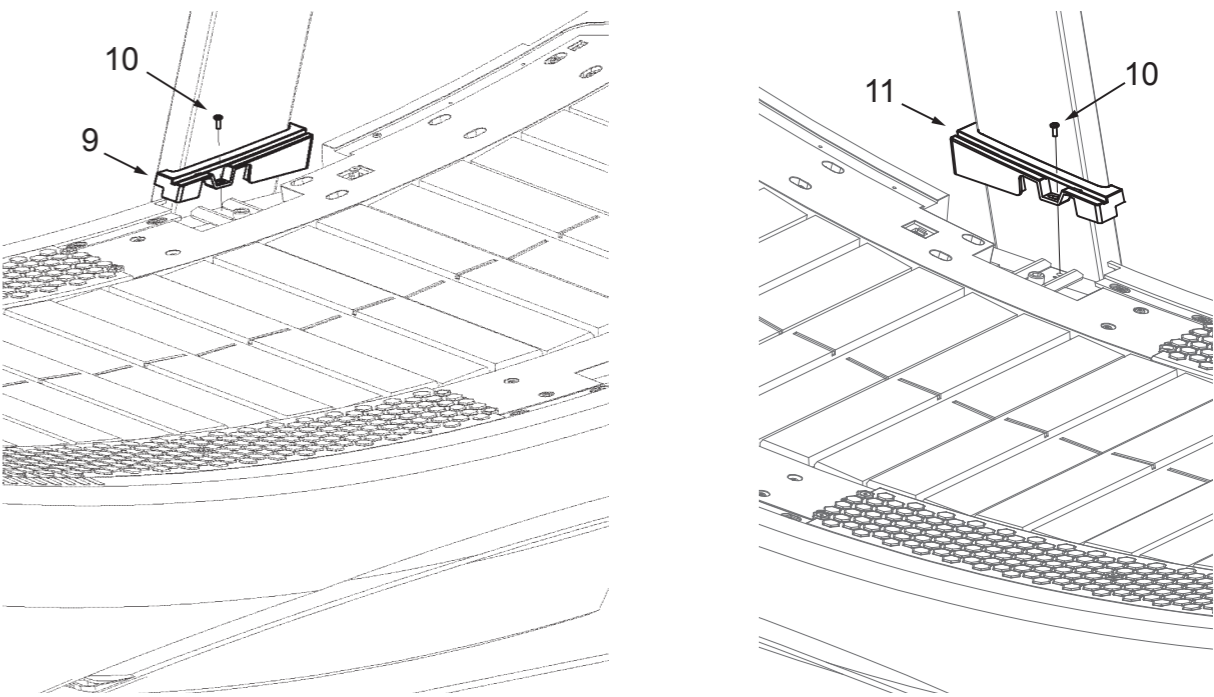
Step3 Assembling the Handrail

- A) Under the right handrail, connect the Power connector from the handrail to the corresponding connector that emerges from the mast.
- B) Under the right handrail, connect the Brake connector from the handrail to the corresponding connector that emerges from the mast.
- C) Align and install both sides of the handrail on the masts and fasten according to the following images.



| ASSEMBLY PARTS | | | SCREWS | | | TOOLS | | |
|----------------|-----------------------------|-----|----------|--|-----|----------|---|-----|
| Ref. NO. | Specification | Qty | Ref. NO. | Specification | Qty | Ref. NO. | Specification | Qty |
| 6 | Handrail and Console Holder | 1 | 7 | Flat Washer Ø8xØ16x1.5T | 4 | T2 | 5mm Phillips Hex Key (Phillips Allen Key) | 1 |
| | | | 8 | Button Head Hex Socket Screw M8x1.25x15L | 4 | | | |

Step4 Fasten Mid-Left and Right Covers

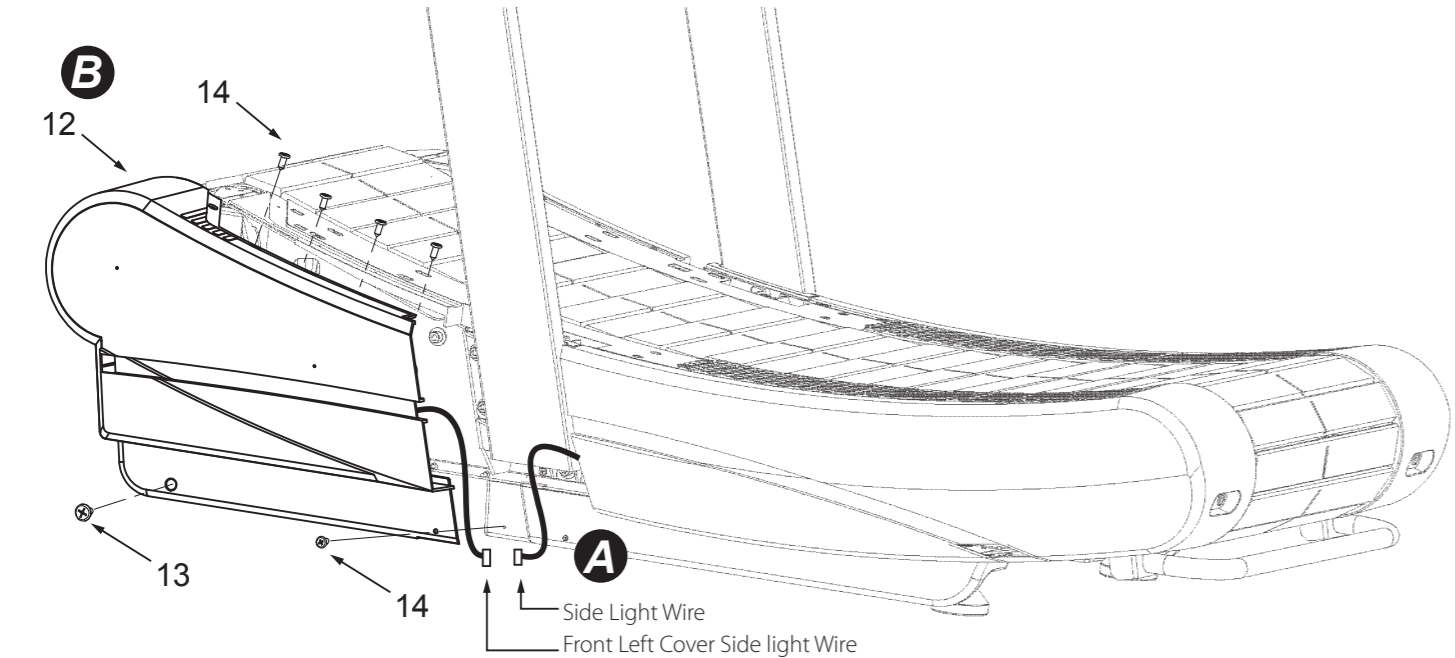


| ASSEMBLY PARTS | | | SCREWS | | | TOOLS | | |
|----------------|-----------------|-----|----------|---------------------------------------|-----|----------|---|-----|
| Ref. NO. | Specification | Qty | Ref. NO. | Specification | Qty | Ref. NO. | Specification | Qty |
| 9 | Mid-Left Cover | 1 | 10 | Round Head Phillips Screws M4x0.7x10L | 2 | T2 | 5mm Phillips Hex Key (Phillips Allen Key) | 1 |
| 11 | Mid-Right Cover | 1 | | | | | | |

Assembly

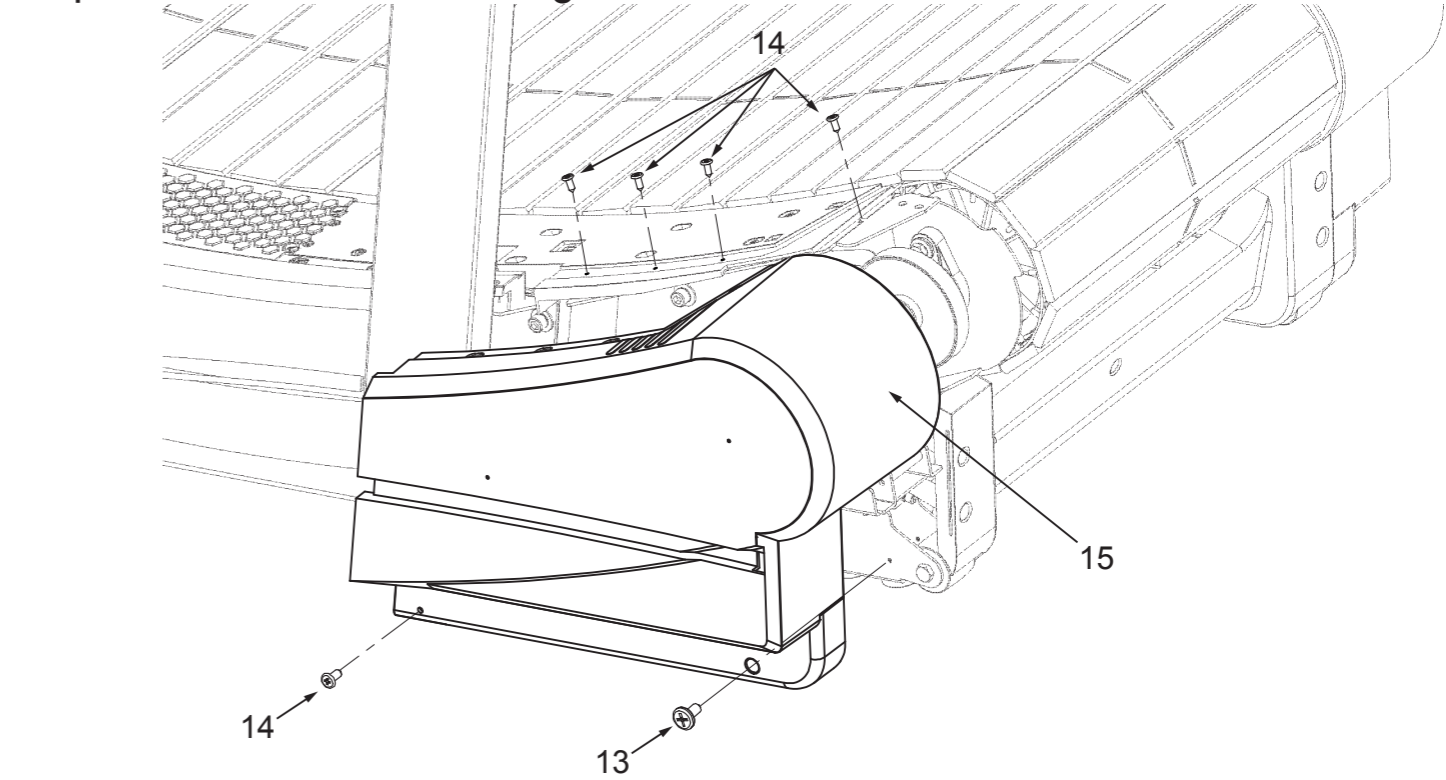
Step5 Installing the Front Left Cover

- A) Connect the wire from the Front Left Cover with that of the light.
B) Fasten the Front Left Cover on.



| ASSEMBLY PARTS | | | SCREWS | | | TOOLS | | |
|----------------|------------------|-----|----------|--|-----|----------|---|-----|
| Ref. NO. | Specification | Qty | Ref. NO. | Specification | Qty | Ref. NO. | Specification | Qty |
| 12 | Front Left Cover | 1 | 13 | Large Phillips Flat Head Screws M5×0.8×10L | 1 | T2 | 5mm Phillips Hex Key (Phillips Allen Key) | 1 |
| | | | 14 | Truss Self Tapping Screw M4×10L | 5 | | | |
| | | | | | | | | |
| | | | | | | | | |

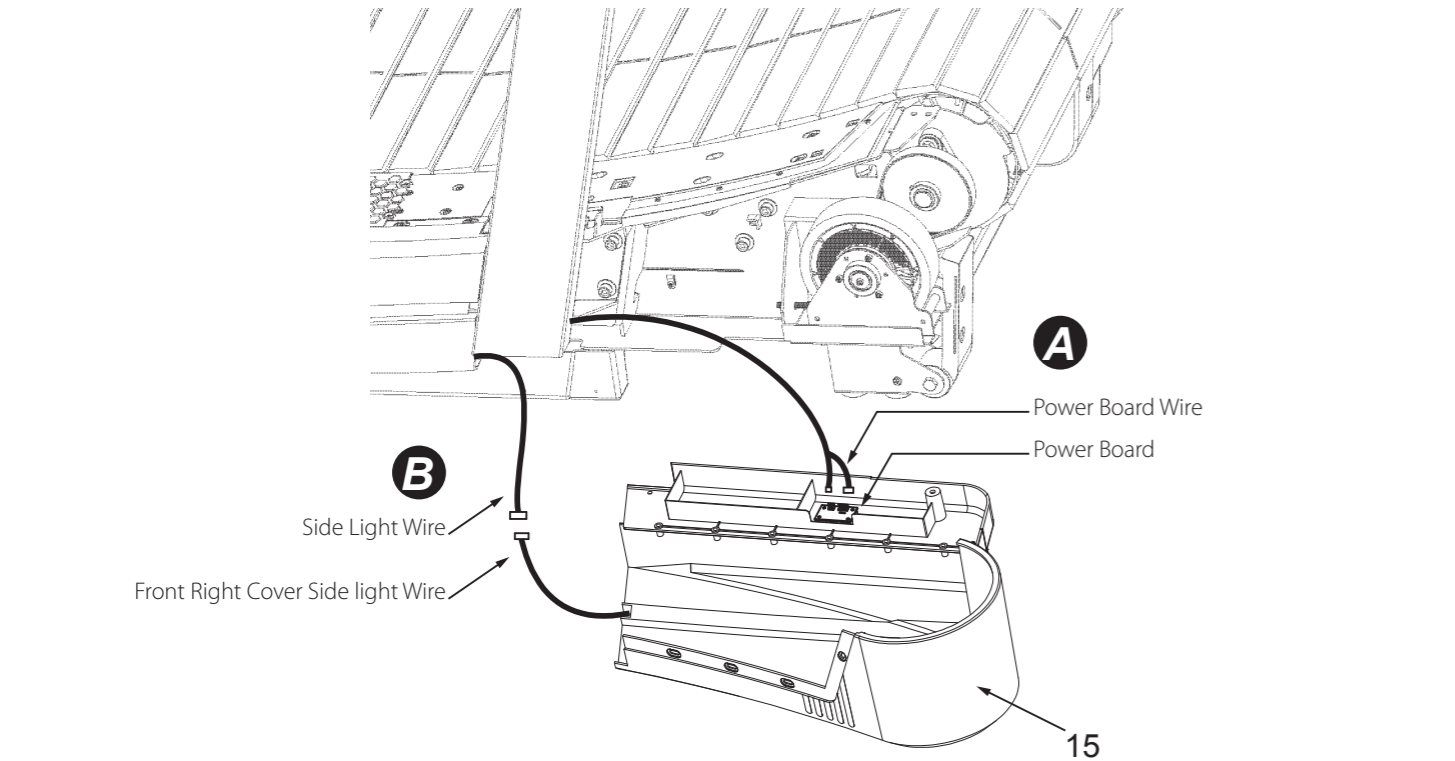
Step7 Fasten the Front Right Cover



| ASSEMBLY PARTS | | | SCREWS | | | TOOLS | | |
|----------------|-------------------|-----|----------|--|-----|----------|---|-----|
| Ref. NO. | Specification | Qty | Ref. NO. | Specification | Qty | Ref. NO. | Specification | Qty |
| 15 | Front Right Cover | 1 | 13 | Large Phillips Flat Head Screws M5×0.8×10L | 1 | T2 | 5mm Phillips Hex Key (Phillips Allen Key) | 1 |
| | | | 14 | Truss Self Tapping Screw M4×10L | 5 | | | |
| | | | | | | | | |
| | | | | | | | | |

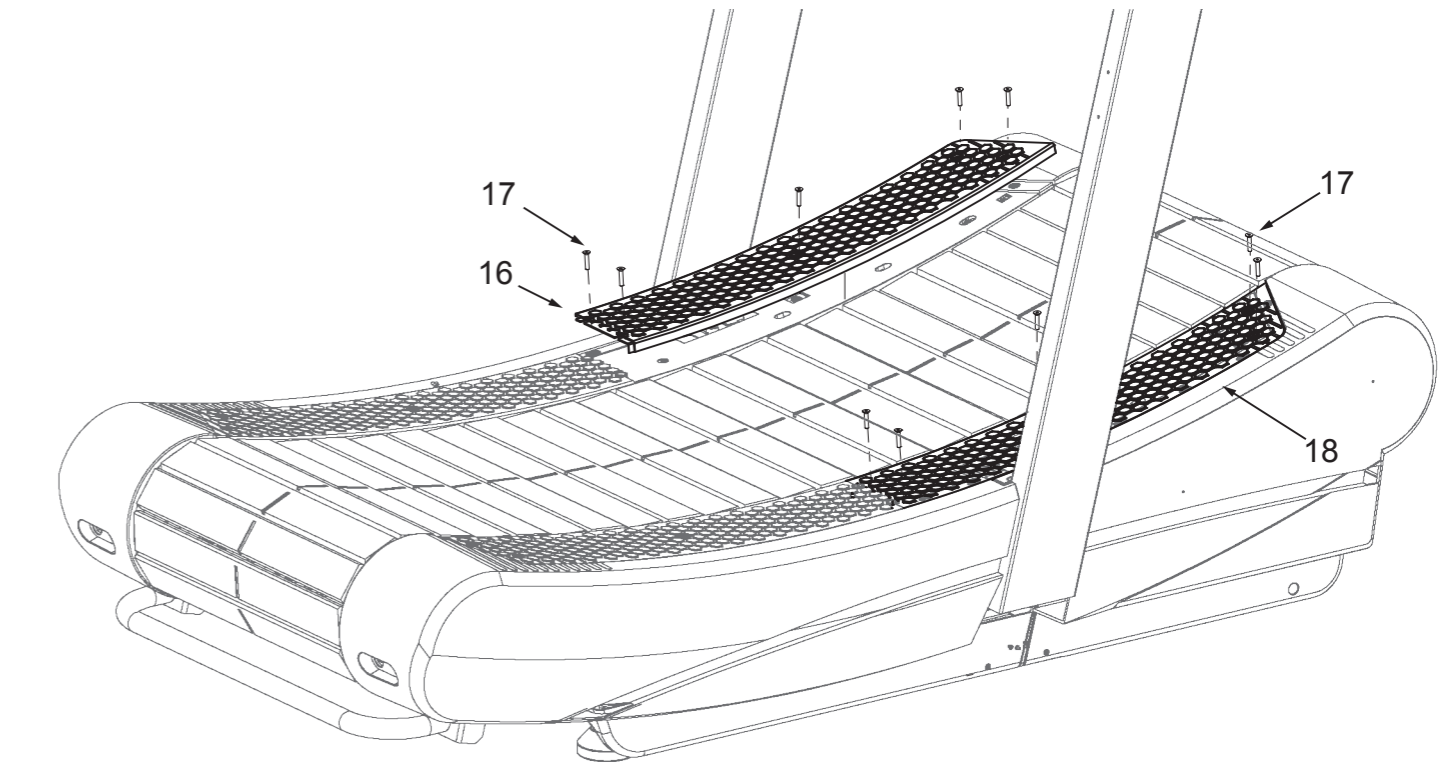
Step6 Installing the Front Right Cover

- A) Connect the power board wire to the power board located in the Front Right Cover.
B) Connecting the light connector in the Front Right Cover with the side light connector.



| ASSEMBLY PARTS | | | SCREWS | | | TOOLS | | |
|----------------|-------------------|-----|----------|---------------|-----|----------|---------------|-----|
| Ref. NO. | Specification | Qty | Ref. NO. | Specification | Qty | Ref. NO. | Specification | Qty |
| 15 | Front Right Cover | 1 | - | - | - | - | - | - |

Step8 Fasten the Front Left and Right Footrests

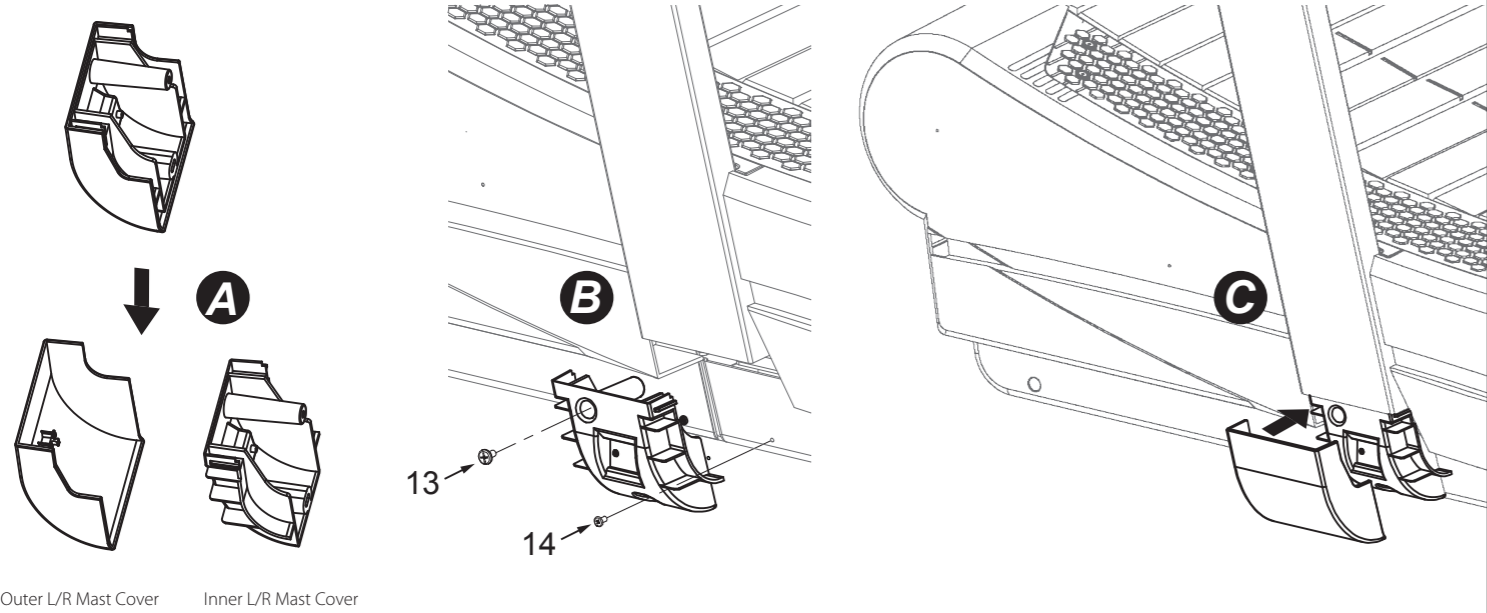


| ASSEMBLY PARTS | | | SCREWS | | | TOOLS | | |
|----------------|------------------------|-----|----------|---|-----|----------|-------------------------|-----|
| Ref. NO. | Specification | Qty | Ref. NO. | Specification | Qty | Ref. NO. | Specification | Qty |
| 16 | Front Left Footrest B | 1 | 17 | Flat head Self Tapping Screw M5×0.8×25L | 10 | T4 | 3mm Hex Key (Allen Key) | 1 |
| 18 | Front Right Footrest B | 1 | | | | | | |
| | | | | | | | | |
| | | | | | | | | |

Assembly

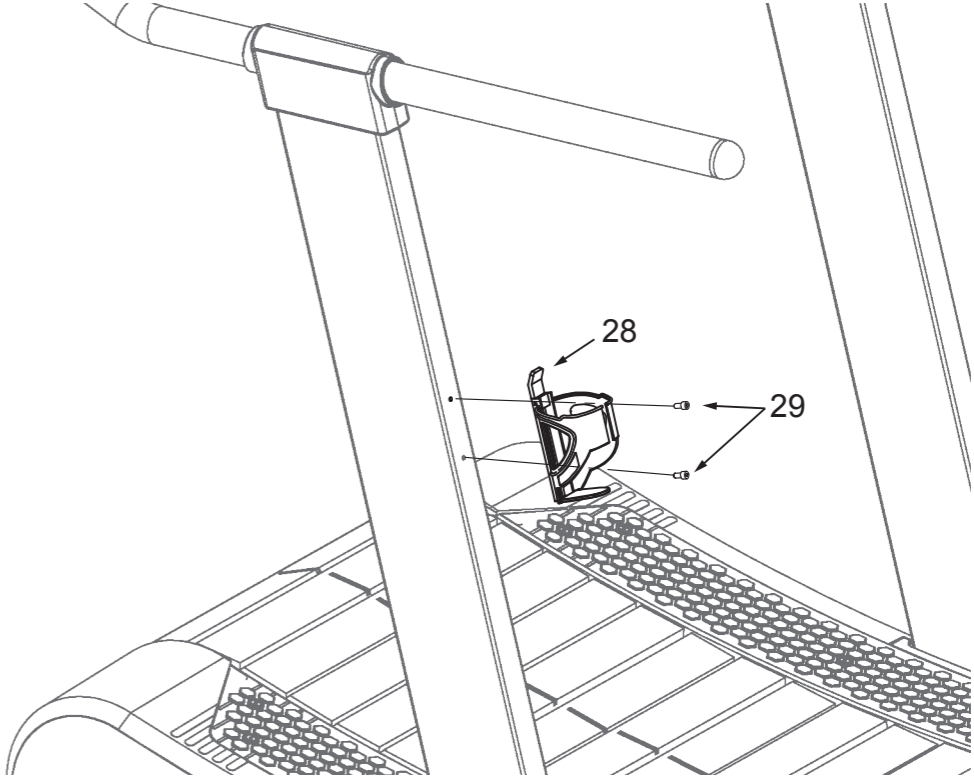
Step9 Install the Inner and Outer Mast Covers

- Please follow the steps below to install the inner and outer mast covers.
- A) Separate the Inner and Out Mast Covers, which were put together for transportation purposes.
 - B) Screw the Inner Mast Cover on the treadmill's main frame.
 - C) Latch on the Outer Mast Cover to the Inner Mast Cover.



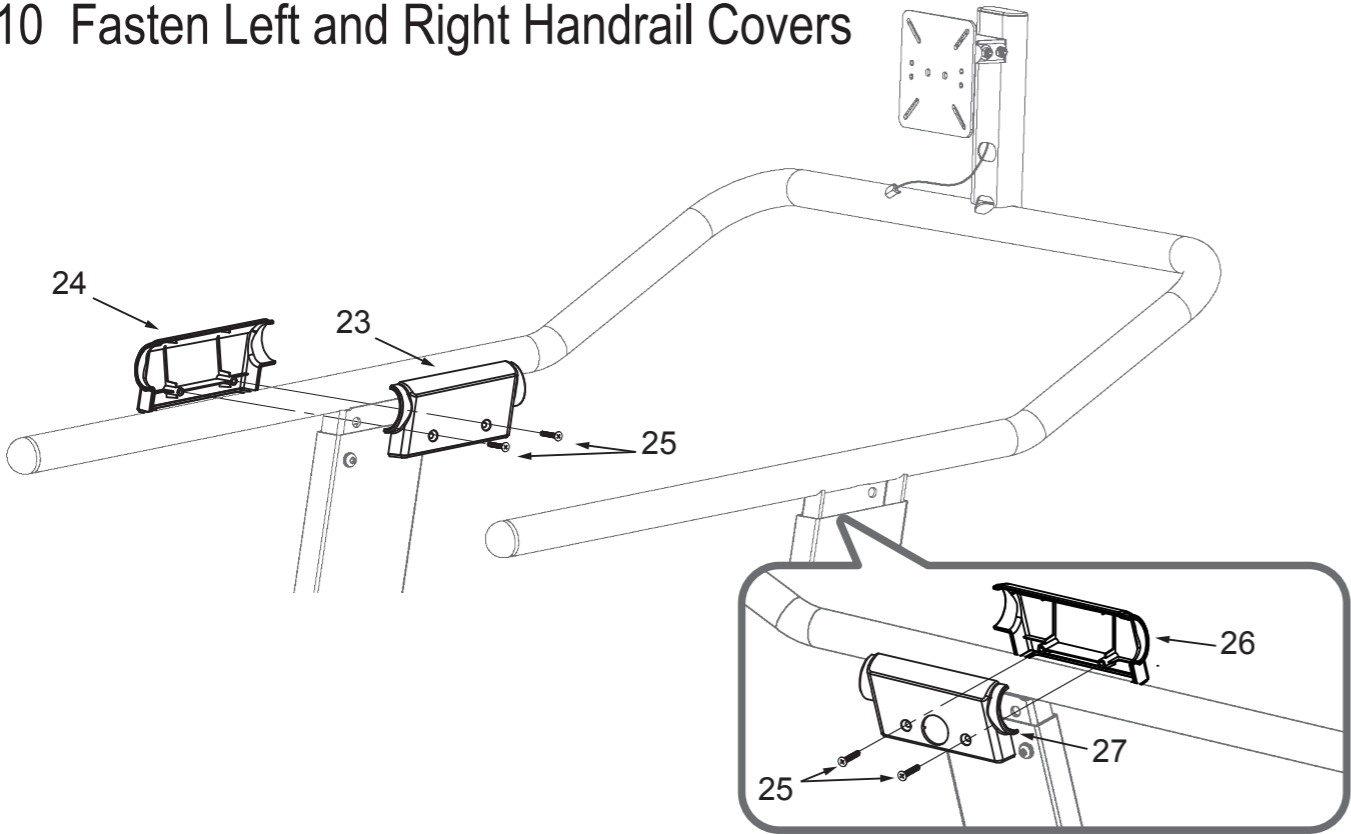
| ASSEMBLY PARTS | | | SCREWS | | | TOOLS | | |
|----------------|------------------------|-----|----------|--|-----|----------|---|-----|
| Ref. NO. | Specification | Qty | Ref. NO. | Specification | Qty | Ref. NO. | Specification | Qty |
| 19 | Inner Left Mast Cover | 1 | 13 | Large Phillips Flat Head Screws M5×0.8×10L | 2 | T2 | 5mm Phillips Hex Key (Phillips Allen Key) | 1 |
| 20 | Outer Left Mast Cover | 1 | 14 | Truss Self Tapping Screw M4×10L | 2 | | | |
| 21 | Inner Right Mast Cover | 1 | | | | | | |
| 22 | Outer Right Mast Cover | 1 | | | | | | |

Step11 Install the Bottle Holder



| ASSEMBLY PARTS | | | SCREWS | | | TOOLS | | |
|----------------|---------------|-----|----------|-----------------------------|-----|----------|-------------------------|-----|
| Ref. NO. | Specification | Qty | Ref. NO. | Specification | Qty | Ref. NO. | Specification | Qty |
| 28 | Bottle Holder | 1 | 29 | Hex Socket Set Screw M5×12L | 2 | T4 | 3mm Hex Key (Allen Key) | 1 |
| | | | | | | | | |
| | | | | | | | | |

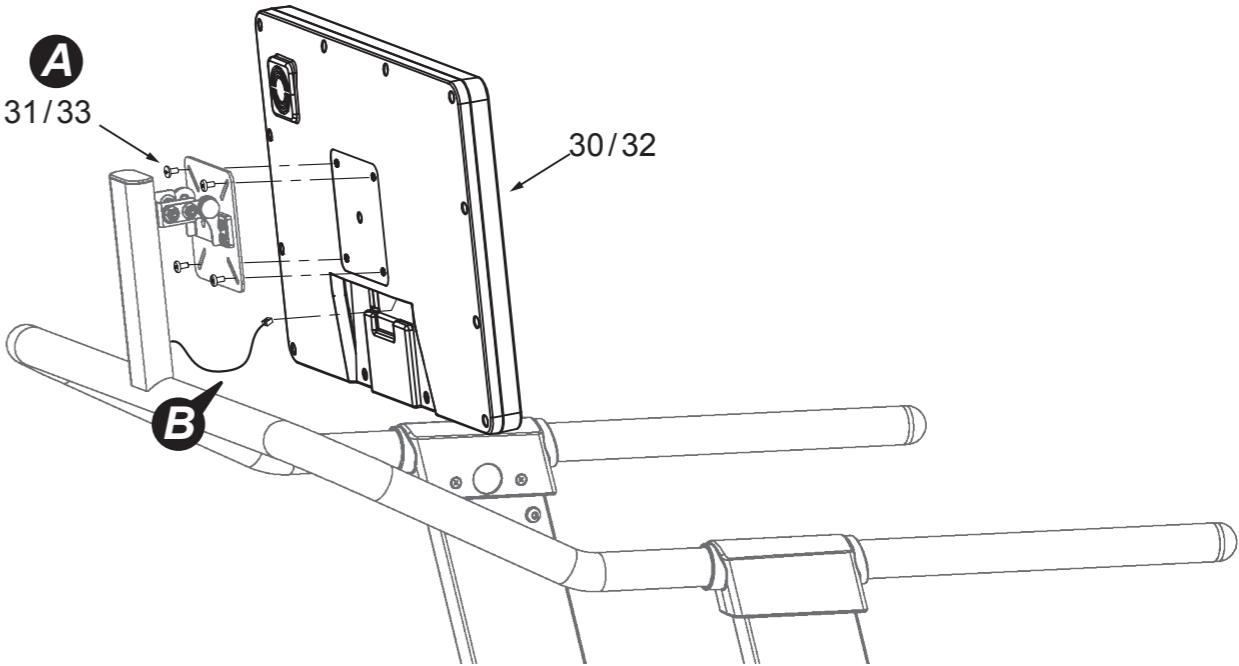
Step10 Fasten Left and Right Handrail Covers



| ASSEMBLY PARTS | | | SCREWS | | | TOOLS | | |
|----------------|------------------------|-----|----------|--|-----|----------|---|-----|
| Ref. NO. | Specification | Qty | Ref. NO. | Specification | Qty | Ref. NO. | Specification | Qty |
| 24 | Left Handrail Cover A | 1 | 25 | Flat Head Phillips Self Tapping Screw M5×0.8×30L | 4 | T2 | 5mm Phillips Hex Key (Phillips Allen Key) | 1 |
| 23 | Left Handrail Cover B | 1 | | | | | | |
| 26 | Right Handrail Cover A | 1 | | | | | | |
| 27 | Right Handrail Cover B | 1 | | | | | | |

Step12 Install the Console

- A) Screw the screen with the console holder on the Handrail.
- B) Connect the RJ45 wire from the Handrail to that of the port on the back of the console.



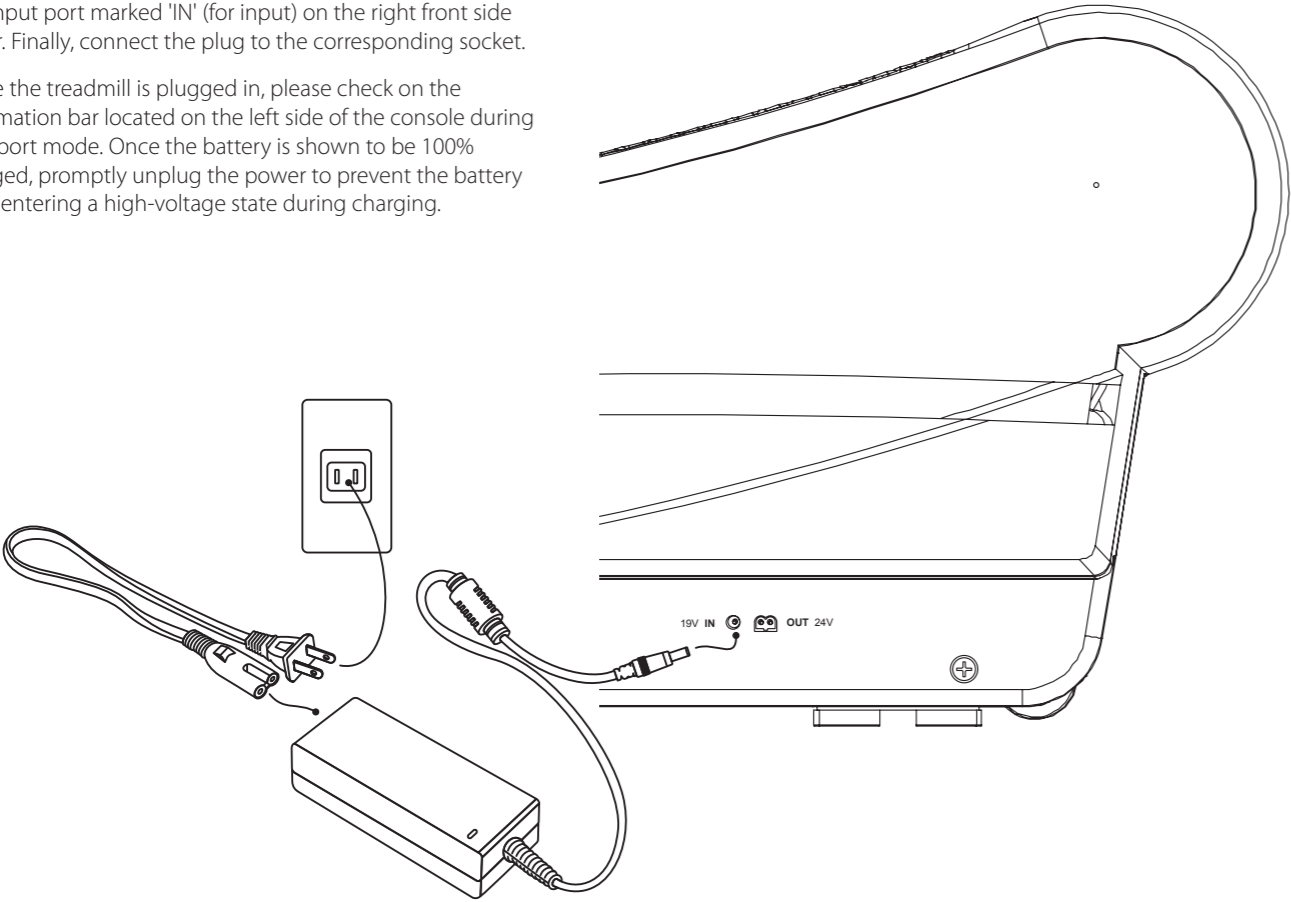
| ASSEMBLY PARTS | | | SCREWS | | | TOOLS | | |
|----------------|---------------------------------|-----|----------|--|-----|----------|---|-----|
| Ref. NO. | Specification | Qty | Ref. NO. | Specification | Qty | Ref. NO. | Specification | Qty |
| 30 | 21.5" TFT Console or | 1 | 31 | Large Phillips Fat Head Screws M5×0.8×10L | 4 | T2 | 5mm Phillips Hex Key (Phillips Allen Key) | 1 |
| 32 | 15.6" TFT Console (Alternative) | 1 | 33 | Round Head Phillips Screws M4×0.7×10L (15.6" TFT only) | 4 | | | |
| | | | | | | | | |
| | | | | | | | | |

Charging

- In the case of first use or battery low, it is recommended to plug in and charge the battery about 3~5 hours before starting to use it.
- Once the charge reaches 100%, please unplug it immediately to avoid the battery being in a high-voltage state during charging.
- The figure below for reference only, please refer to the actual Charging Cable.

Insert the Figure-8 jack at the other end of the plug into the adapter first. Then, insert the round jack of the power cord into the input port marked 'IN' (for input) on the right front side cover. Finally, connect the plug to the corresponding socket.

While the treadmill is plugged in, please check on the information bar located on the left side of the console during the sport mode. Once the battery is shown to be 100% charged, promptly unplug the power to prevent the battery from entering a high-voltage state during charging.

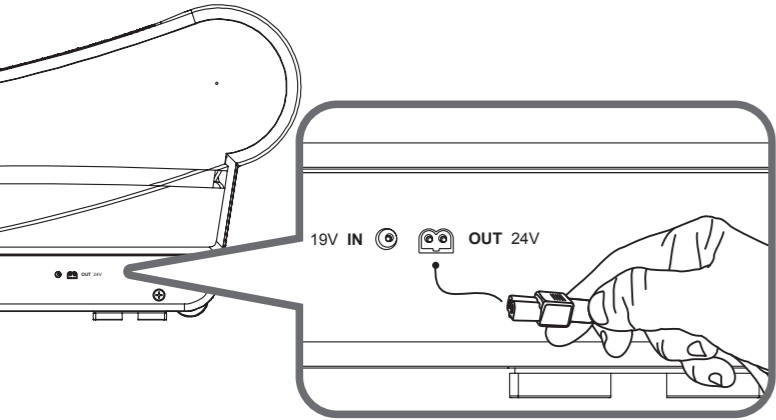


Power Generation

- Please be aware that a speed greater than 5 km/h is required for charging.
- 30 watt of the power generated will be used. The treadmill will prioritize 30W of the power generated for the screen and the LED indicator.

This treadmill can transfer running power into electric power. The maximum power generated is 150 watt/ h. While providing power to the console, the treadmill could also charge an external power bank. The following steps will demonstrate how to charge the power bank.

1. Plug the figure-8 connector of the Power Output Cable on the Output side.
2. Plug the other side with the Anderson plug of the charger on the power bank for power.

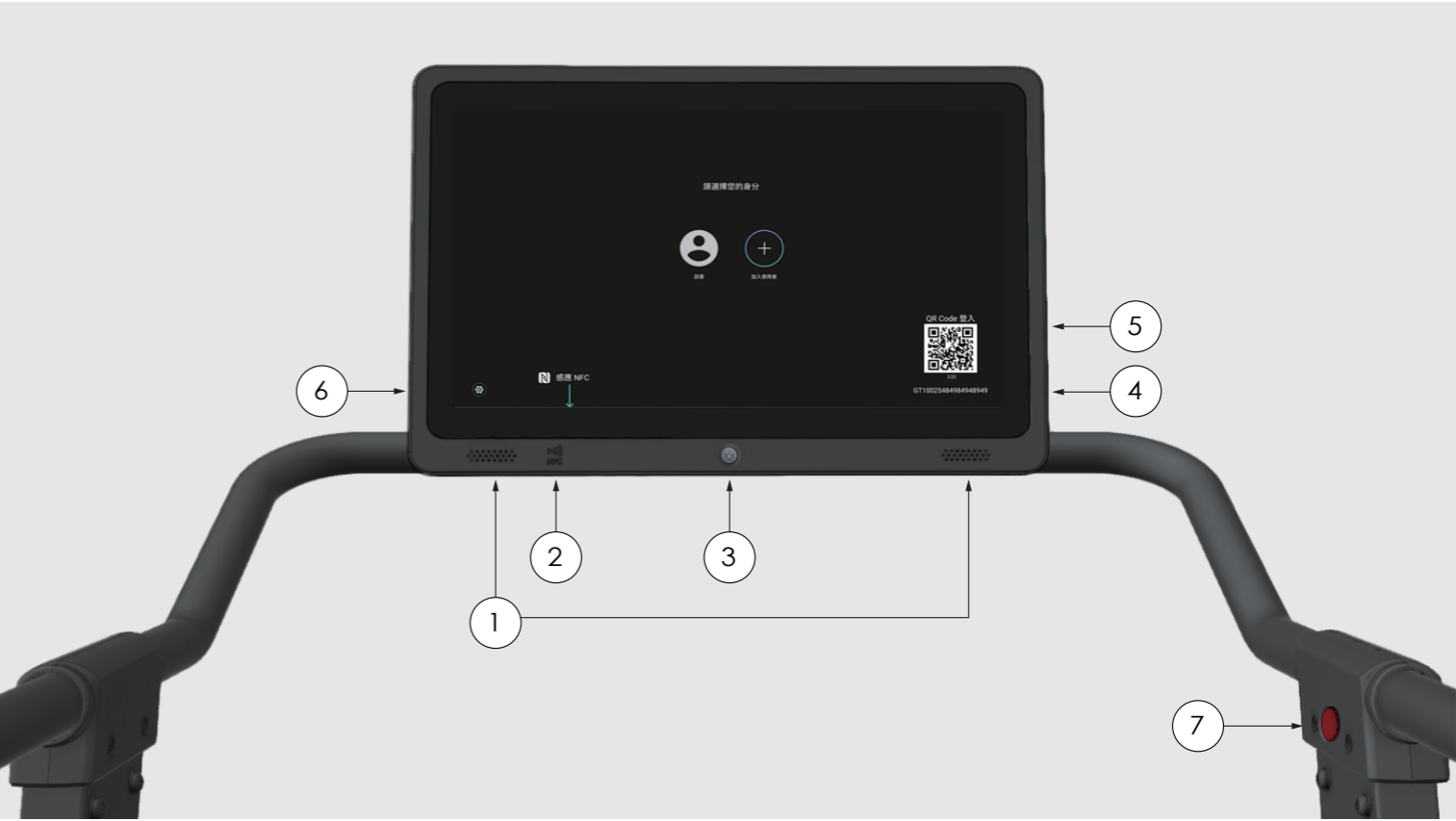


Specification

- Model: GT1000
 - Size: L 73.6"×W 35.8"×H 66.5" / 187×91×169 cm
 - Product Weight: 360.7 lb / 163.6 kg
 - Max. User's Weight: 397 lb / 180 kg
 - Running Area: 18.9"×66.1" / 48×168 cm
- Touch Screen (Optional): ☐ 15.6" TFT ☐ 21.5" TFT
 - Power Source: Self-Generating Power
 - Battery: Rechargeable Lithium battery
 - Capacity: 77Wh (5.2Ah, 14.8V)
- APP: Ala Cloud Run, Youtube, Netflix, Iqiyi, Spotify
 - Sport Mode: Quick Start / Target / Simple Program / History / Cloud Run
 - Heart Rate Monitor^{Notes}: Bluetooth® / NFC™
 - Wireless Technology: Bluetooth Low Energy FTMS Profile, Wi-Fi
 - External Power Adapter: 19V / 3A

Operation Overview

The TFT only has one button. Most actions are done through on-screen operation. You can turned on the screen and the treadmill by walking at the pace of 5 km/h on the belt. Once your exercise is completed, select uploading data and press the button on the lower of the console to turn the treadmill off.



| No. | Figure | Definition |
|-----|--------|---|
| 1 | | Speakers (L/R) |
| 2 | | NFC Detection Point: Take bound NFC device ^{Notes} near the spot to have quick login to GPTfit.com . |
| 3 | | Power Button: Press the button to turn off. |
| 4 | | Product Serial Number |
| 5 | | Sign in using QR codes: Scan the QR code to register/ sign in to your GPTfit.com account on the treadmill. |
| 6 | | Quick Setup: Pairing Bluetooth Heart Rate Device/ Audio Device Wi-Fi Selection Volume Adjustment Screen Brightness Adjustment |
| 7 | | Electronic Brake Button: (Red Button) Press and continuously hold onto the button to slow down or stop the belt. |

- Notes
- 1 NFC Tag (Passive).
 - 2 NFC function is limited to using ATTACUS Obeat3 heart rate armband (Not included in the packaging).
 - 3 Heart rate reading will only appear when the console is connected to an external heart rate device.

At the end if its useful life please dispose of this article correctly and safely (local refuse sites).